



## ESDA-804-00



Our ESDA Series is suitable for storage under controlled atmosphere. This can be achieved through a nitrogen unit and / or installation of our state-of-the-art U-4001 dry unit. The cabinet is delivered without a control panel.

Proven in use around the world, the unique design of the ESDA-804 with optional drying unit U 4001 is highly energy efficient, representing a significant cost advantage for our customers.

The ESDA version is produced ESD safe. The surfaces of the cabinet are not chargeable. Acrylic body  $10^{-7} \Omega/\text{sq}$ .



### 0 series display

Battery operated humidity measurement device (standard in cabinet).



## Features

**Hygrometer**  
**Lockable door**  
**ESD safe design**

**Shelves**

**Nitrogen unit option**  
**Drying unit option**  
**Power supply**

Hygrometer with alarm function, accuracy +/- 3%  
Door locked with key.  
Norm (IEC 61340-5-1) The surfaces of the cabinet are ESD safe.  
Acrylic body  $10^{-7} \Omega/\text{sq}$ .  
10 in height adjustable chromium plated steel shelves connected with conductive frame  $10^3 \Omega/\text{sq}$ .  
Pre mounted holes for installing N<sup>2</sup> Flow system.  
Pre mounted hole for installing drying unit.  
Cable 5 meter with IEC plug (when dry unit is mounted)

## Benefits

**Options availability**  
**Highly energy sufficient**  
**Recoverytime after dooropening**  
**Datalogging**  
**Clear Polycarbonate material**

Dry unit U-4001 / N2 (auto) Flow / SMD Reel racks, etc.  
Average power consumption 35 W/h (when dry unit is mounted)  
± 15 min (when dry unit is mounted)  
with Rotronic datalogger  
Easy to look through



## Technical Data Cabinet with drying-unit U-4001

External dimensions:	(WxHxD) 1152 x 1485(1690) x 517 mm
Internal dimensions:	(WxHxD) 1135 x 1480 x 480 mm
Weight:	87 kg
Weight on shelf:	30 kg
Max. loading capacity:	200 kg
Frame:	Aluminium, coated
Body:	ESD-Polycarbonate 10 <sup>7</sup> Ω/sq
Shelves (WxD):	9 long adjustable shelves 460 x 490 mm, 1 short adjustable shelf 460 x 380 mm
Volume:	790 L (due to volume of drying unit)
Voltage:	230 V, 50 Hz 120 V, 60 Hz (optional)
Power consumption:	35 W/h
Grounding:	class 1, hard grounded
RH%:	Drying 1 - 2%*

\*(depending on amount of dooropenings)

## Technical Data N<sup>2</sup> (Auto) Flow

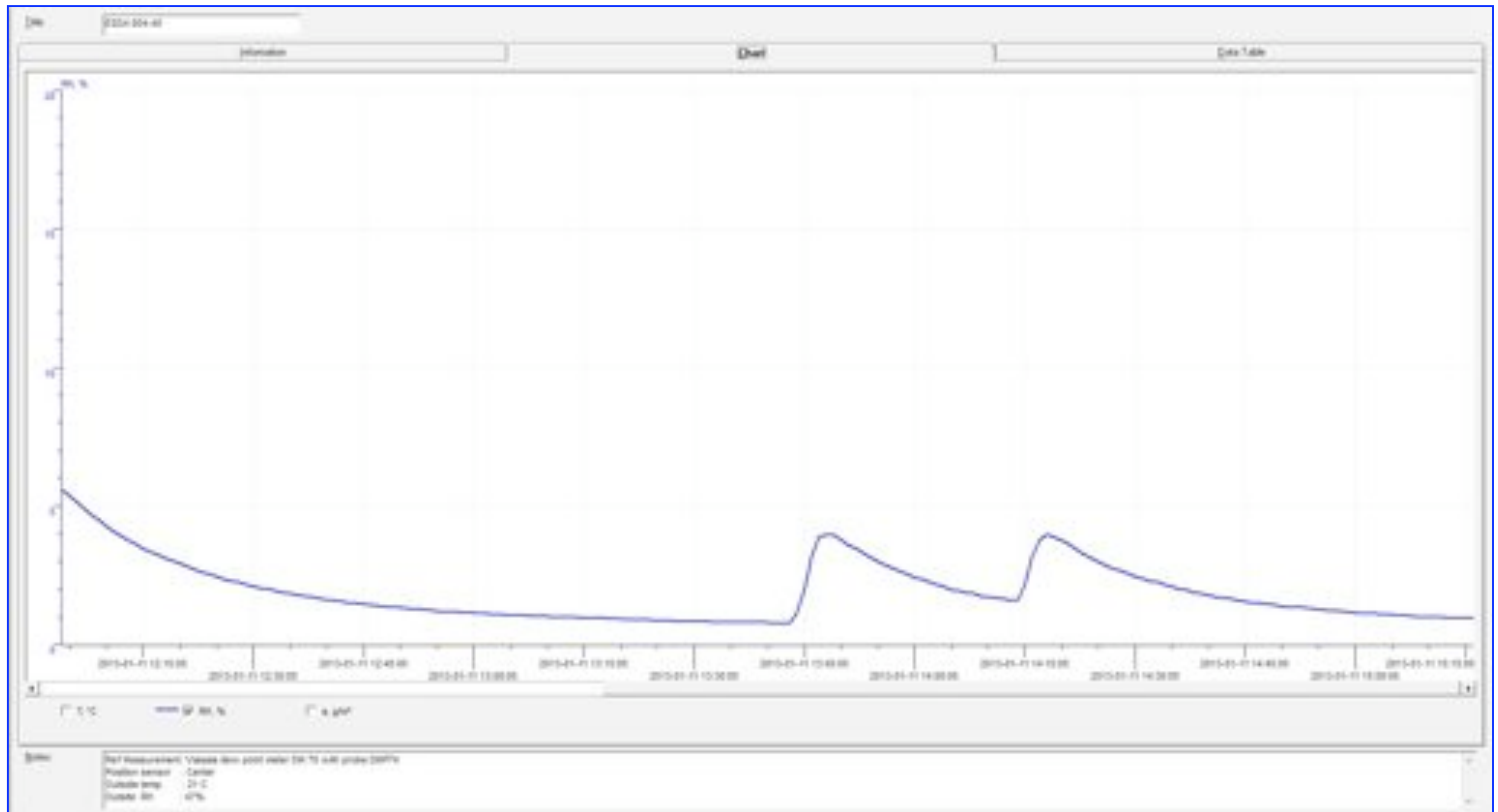
N <sup>2</sup> flow:	10 – 100 L/min	
N <sup>2</sup> autoflow:	N <sup>2</sup> connection pressure:	1 – 6 bar
	N <sup>2</sup> Standby- quantity:	0 – 25 L/min
	N <sup>2</sup> (Purge):	0 – 100 L/min
	(Purge-Time):	0 – 99 min

## Technical Data Cabinet without drying-unit

External dimensions:	(WxHxD) 1152 x 1485(1690) x 517 mm
Internal dimensions:	(WxHxD) 1135 x 1480 x 480 mm
Weight:	80 kg
Weight on shelf:	30 kg
Max. loading capacity:	200 kg
Frame:	Aluminium, coated 10 <sup>7</sup> Ω/sq
Body:	ESD-Polycarbonate
Shelves (WxD):	10 long adjustable shelves 460 x 490 mm
Volume:	800 L



## Performance test



## Test conditions

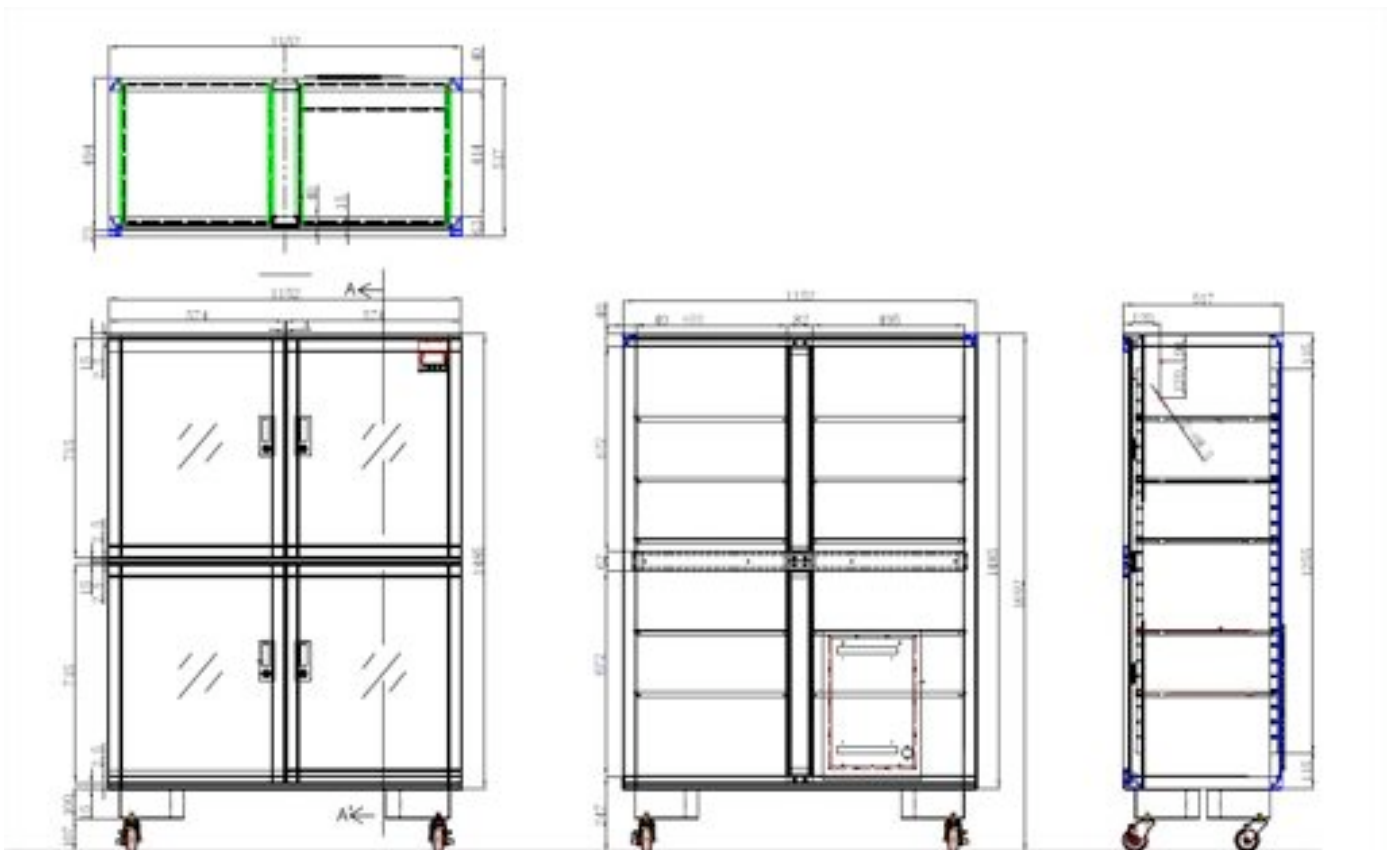


<b>Instrument:</b>	Vaisala.
<b>Type of dew point sensor:</b>	Vaisala drycap 180M
<b>Accuracy of dew point sensor:</b>	$\pm 0,2^{\circ} \text{C}$ at $+ 20^{\circ} \text{C}$ ( $+ 68^{\circ} \text{F}$ )
<b>Location of sensor:</b>	In the direct surrounding of cabinet sensor
<b>Ambient conditions:</b>	Humidity $50 \pm 5\% \text{ RH}$ , $25^{\circ} \pm 2^{\circ} \text{C}$ , Pressure $994 \pm 20 \text{ hPa}$ .
<b>Dooropenings:</b>	2 dooropenings, 15 sec. (average RH 0,70%)



## Technical Dimensions

ESDA 804-00/40



Dimensions mentioned in mm.

Maximum number of shelves what can be mount in the cabinet (with dry unit)	37 pcs long shelves, 7 pcs short shelves
Maximum number of shelves what can be mount in the cabinet (without dry unit)	44 pcs long shelves
Mininum space between the shelves	35 mm



## Options



### **N2 auto flow system,**

The Auto-Flow-System is developed to use in combination with a Totech drying cabinet. The apparatus is used for the quick removal of moisture in the cabinet using (N<sup>2</sup>). A second flow meter has been installed to realize the drying process by using a timer that will be triggered after the door has been opened.

Item number 20000021.



### **N2 flow system 10-100,**

The N2 Flow-System is developed to use in combination with a Totech drying cabinet. The apparatus is used for the quick removal of moisture in the cabinet after the doors have been opened. The drying process is realized by using nitrogen (N<sup>2</sup>).

Item number 20010020.



### **SMD Reel Holders,**

460 mm length

Item number 20014000

### **SMD Reel supports,**

reel support for 2001400

Item number 20014200



### **Rotronic datalogger set,**

Including Software HW4-E-V3 and Cable AC3006

Item number 47000580



### **Humidity calibrator Hygropalm 22,**

Precision measuring device for calibrating sensors

Set including Hygroclip sensor, case and cable:

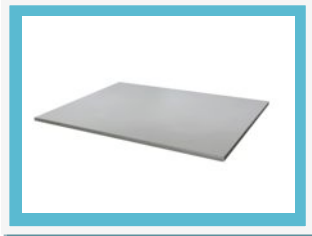
Item number 20001019

Hygropalm only:

Item number 20001016

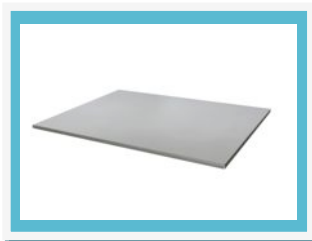


## Options



### Shelf ESDA-804 short incl. Brackets,

Item number 30010100



### Shelf ESDA-804 long incl. Brackets,

Item number 20100021



### Drying unit U-4001,

For rapidly decreasing the humidity level (no control function).

Voltage level: 230 V/50 Hz. (optional 120 V/60 Hz)

Power consumption: 35 W/h

Dimensions: W x L X D = 260 mm x 380 mm x 100 mm

Weight: 8,1 kg.

Item number 230V/50Hz 30021129

Item number 120V/60Hz 30021131

Item number: 93009423 version 06-02

